

# HOW TO... MAKE A BUG HOTEL

From providing services like pollination and pest control, to breaking down fallen leaves and dead wood into soil, bugs and other insects are an important part of the ecosystem.

Unfortunately, these amazing little critters are in decline in the UK. One of the ways you can make your patch a haven for bugs, bees and other insects is by making a bug hotel.

## WHAT YOU'LL NEED

### Materials

- Dry sticks or twigs – perfect for ladybirds to hibernate in.
- Hollow stems – such as old bamboo canes or rolled newspaper straws.
- Blocks of wood – drilled holes in blocks of wood make good nesting sites for solitary bees (get an adult to help when you drill the holes).
- Dry leaves – these mimic the forest floor.
- Corrugated cardboard – roll up into a cylinder for lacewings.
- Straw and hay – different insects can burrow in and find safe hibernation sites.
- Loose bark – beetles, centipedes, spiders and woodlice all lurk beneath wood and bark.

### Equipment

- Scissors.
- Waterproof tape or string.
- An electric drill (optional and with an adult to help).



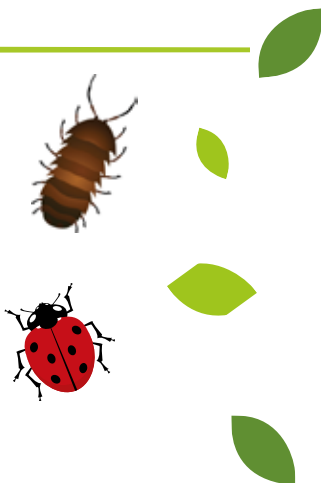
*Gather pipes and hollow stems.*



*Holes make great hiding places.*



*Use dry leaves and bark for ladybirds.*



## REUSE AND RECYCLE!

You can also use recycled materials if you have them, such as old tin cans, paper cups, glass jars and plastic milk bottles.



*Collect old pots, jars and containers.*



**HOW TO...  
MAKE A  
BUG HOTEL**



**STEP-BY-STEP**

1. Create the walls of your bug hotel. Use the materials to create a container, for example: an old plant pot, the end of a plastic milk carton, a glass jar, an old cardboard coffee cup or a tin can.



2. If you want to hang your hotel, use some garden string to loop around the container or create holes for the string to fit through before filling it.



3. If you are making a big bug hotel on the ground, use wood, pallets or fallen branches to make your super-sized container. Make sure it's solid so it won't fall over!



4. Create a cosy interior by filling your home with a selection of the materials. If necessary, cut the material to fit. Pack the materials tightly so they won't fall out, making sure that the hollow ends face outwards.



*A super-sized bug hotel can feature lots of habitats for different species.*

**WHERE TO PUT THE BUG HOTEL**

Some insects like cool, damp conditions; others prefer the sun. Find a semi-shaded spot (under a tree or next to a hedge, for example) where one part will catch the sun.

If you're hanging your hotel, it should be no higher than 1m above the ground. The entrance should be tilted slightly so that rainwater can run out.

