

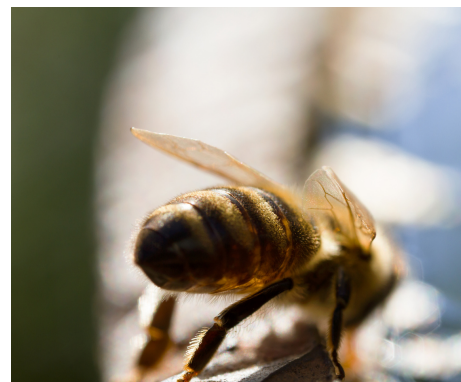


## MAKE A BEE BATH

---

### Stuff you'll need

- A shallow dish or bowl, or anything else that can be filled with water.
- Some stones.
- Something to raise your container up if it doesn't have a base, like an upturned plant pot.



### Step-by-step guide

1. Choose a spot on your patch that is protected and shady.
2. Place your container on top of an upturned plant pot if using.
3. Clean your pebbles and place them inside your dish or bowl.
4. Add water, making sure you don't fully submerge your stones. Bees need places to perch as they drink and collect water.



---

**HELP BOOST YOUR LOCAL BEE POPULATION BY GARDENING FOR BUMBLEBEES!**



## TOP TIPS FOR PROVIDING WATER FOR WILDLIFE

---

1. Grab free/low cost pebbles/rocks/sand/gravel/plants for your water features by asking on your local Facebook group or checking out sites like [Gumtree](#) and [Freecycle](#).
2. Put water in a place that you can easily see so you can observe all the wildlife you're attracting to your patch!
3. Clean and fill your baths, ponds and puddles regularly.
4. When it's cold, check your water for freezing and break the ice when you need to. When the weather is very hot, you may need to fill it up more frequently.

